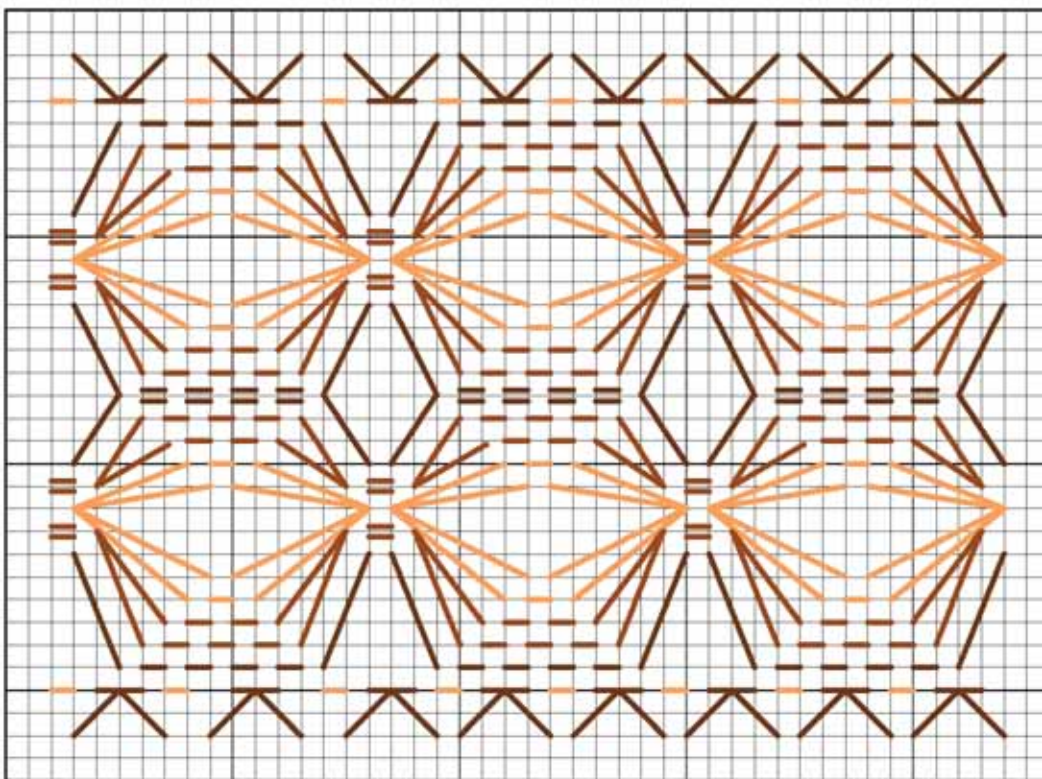



Material: Linha **Anchor Mouliné** nas cores indicadas na chave de cores - 1 meada de cores - 1 meada de cada uma das cores.
 Linha Carla cor natural (para o crochê). Toalha de mão similar à foto. Agulha **Tapestry Corrente** nº 22 e
 agulha niquelada para crochê **Corrente** nº 3 (1.25 mm)







Chave de cores
 vagonite c/ 6 fios da
 linha  Anchor Mouliné


-  - 306
-  - 309
-  - 310



legenda:




- + - p.b. (ponto baixo)
-  - picô (3corr., 1 p.bx. na 1ª das 3 corr.)
-  - corr. (correntinha)
-  - p.a. (ponto alto)

Chave de cores
 vagonite c/ 6 fios
 da linha
 Anchor Mouliné

-  - 8
-  - 11
-  - 13



legenda:

- + - p.b. (ponto baixo)
-  - picô (3corr., 1 p.bx. na 1ª das 3 corr.)
-  - corr. (correntinha)
-  - p.a. (ponto alto)

